

[This question paper contains 4 printed pages.]

Your Roll No.....

Sr. No. of Question Paper : 3120

H

Unique Paper Code : 32371403

Name of the Paper : Statistical Quality Control

Name of the Course : B.Sc. (Hons.) Statistics

Semester : IV

Duration : 3 Hour

Maximum Marks : 75

Instructions for Candidates

1. Write your Roll No. on the top immediately on receipt of this question paper.
2. Attempt **Six** questions in all. Q. No. **1** is compulsory, **four** questions from **Section A** and **one** question from **Section B**.
3. Use of simple scientific calculator is allowed.
4. Required Statistical tables are attached with the paper.

1. (a) Explain the rationale behind placing the control limits at three and/or two standard deviations from the mean. (5)
- (b) What do you understand by the quality of a manufactured product? Discuss briefly any six dimensions of quality. (5)

OR

Discuss the significance of six sigma training plan as an integral part of six sigma implementation.

Section A

2. (a) Discuss the interpretation of control charts for variables, when all sample points lie within 3σ limits. Also, describe the Western Electric rules for different non-random patterns. (6½)
- (b) Control charts for \bar{X} and s are maintained on a quality characteristic. The sample size is $n = 6$. After 50 subgroups have been analyzed, we obtain

$$\sum_{i=1}^{50} \bar{X}_i = 1000, \text{ and } \sum_{i=1}^{50} s_i = 75$$

- (i) Calculate the upper and lower control limits.
- (ii) Assuming that both charts exhibit control, obtain the natural tolerance limits. (6½)

P.T.O.

3. (a) Discuss and derive the construction of control charts for controlling process average and process variability for samples of small sizes, when population parameters are unknown. (6½)
- (b) What are modified control limits, explain how they are derived? Why it is required to construct modified control limits? (6½)
4. (a) Discuss the construction of proportion non-conforming chart when all samples are of same size. How is the procedure modified for variable sample size? Discuss the procedure when the variable is standardized. (6½)
- (b) Distinguish between natural tolerance limits and specification limits. Discuss the ideal situation? (6½)
5. (a) Control charts for \bar{X} and R are to be established to control the tensile strength of a metal part. Assume that tensile strength is normally distributed. Thirty samples of size $n = 6$ parts are collected over a period of time with the following results :

$$\sum_{i=1}^{30} \bar{X}_i = 6000, \text{ and } \sum_{i=1}^{30} R_i = 150$$

- (i) Calculate control limits for \bar{x} and R.
- (ii) Both charts exhibit control. The specifications on tensile strength are 200 ± 5 . What are your conclusions regarding process capability? (6½)
- (b) What do you understand by Acceptance rectification sampling inspection plans? Discuss their importance. Derive an expression for Producer's risk and discuss its significance. (6½)
6. (a) It is known that $\sigma^2 = 36.0$ and $n = 4$. The $CL = 200$, $UCL = 209$, and $LCL = 191$, when \bar{x} chart is used to control the process mean of a normally distributed quality characteristic. If the process mean shifts to 186, find the probability that this shift is detected at the earliest. (6½)

(b) Distinguish between :

(6½)

(i) AOQ and AOQL

(ii) AQL and LTPD

Section B

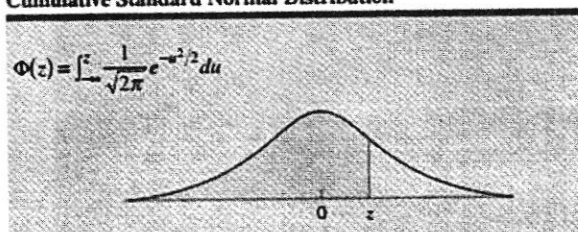
7. (a) Define Laspeyre's, Paasche's and Fisher's Price Index Numbers and discuss their merits and demerits. (6½)

(b) Explain briefly the methods of computing index numbers using simple and weighted average of price relatives. Derive Paasche's formula for index numbers using weighted average of price relatives. (6½)

8. (a) Explain (i) Time Reversal Test, and (ii) Factor Reversal Test in index numbers. In each case give two examples of index numbers formula which satisfy the above tests. (6½)

(b) Discuss the importance and limitations of Index Numbers. (6½)

Cumulative Standard Normal Distribution



z	0.00	0.01	0.02	0.03	0.04	0.05	0.06	0.07	0.08	0.09
0.0	0.50000	0.50399	0.50798	0.51197	0.51595	0.51994	0.52392	0.52790	0.53188	0.53586
0.1	0.53983	0.54379	0.54776	0.55172	0.55567	0.55962	0.56356	0.56749	0.57142	0.57534
0.2	0.57926	0.58317	0.58706	0.59095	0.59483	0.59871	0.60257	0.60642	0.61026	0.61409
0.3	0.61791	0.62172	0.62551	0.62930	0.63307	0.63683	0.64058	0.64431	0.64803	0.65173
0.4	0.65542	0.65910	0.66276	0.66640	0.67003	0.67364	0.67724	0.68082	0.68438	0.68793
0.5	0.69146	0.69497	0.69847	0.70194	0.70540	0.70884	0.71226	0.71566	0.71904	0.72240
0.6	0.72575	0.72907	0.73237	0.73565	0.73891	0.74215	0.74537	0.74857	0.75175	0.75490
0.7	0.75803	0.76115	0.76424	0.76730	0.77035	0.77337	0.77637	0.77935	0.78230	0.78523
0.8	0.78814	0.79103	0.79389	0.79673	0.79954	0.80234	0.80510	0.80785	0.81057	0.81327
0.9	0.81594	0.81859	0.82121	0.82381	0.82639	0.82894	0.83147	0.83397	0.83646	0.83891
1.0	0.84134	0.84375	0.84613	0.84849	0.85083	0.85314	0.85543	0.85769	0.85993	0.86214
1.1	0.86433	0.86650	0.86864	0.87076	0.87285	0.87493	0.87697	0.87900	0.88100	0.88297
1.2	0.88493	0.88686	0.88877	0.89065	0.89251	0.89435	0.89616	0.89796	0.89973	0.90147
1.3	0.90320	0.90490	0.90658	0.90824	0.90988	0.91149	0.91308	0.91465	0.91621	0.91773
1.4	0.91924	0.92073	0.92219	0.92364	0.92506	0.92647	0.92785	0.92922	0.93056	0.93189
1.5	0.93319	0.93448	0.93574	0.93699	0.93822	0.93943	0.94062	0.94179	0.94295	0.94408
1.6	0.94520	0.94630	0.94738	0.94845	0.94950	0.95053	0.95154	0.95254	0.95352	0.95448
1.7	0.95543	0.95637	0.95728	0.95818	0.95907	0.95994	0.96080	0.96164	0.96246	0.96327
1.8	0.96407	0.96485	0.96562	0.96637	0.96711	0.96784	0.96856	0.96926	0.96995	0.97062
1.9	0.97128	0.97193	0.97257	0.97320	0.97381	0.97441	0.97500	0.97558	0.97615	0.97670

2.0	0.97725	0.97778	0.97831	0.97882	0.97932	0.97982	0.98030	0.98077	0.98124	0.98169
2.1	0.98214	0.98257	0.98300	0.98341	0.98382	0.98422	0.98461	0.98500	0.98537	0.98574
2.2	0.98610	0.98645	0.98679	0.98713	0.98745	0.98778	0.98809	0.98840	0.98870	0.98899
2.3	0.98928	0.98956	0.98983	0.99010	0.99036	0.99061	0.99086	0.99111	0.99134	0.99158
2.4	0.99180	0.99202	0.99224	0.99245	0.99266	0.99286	0.99305	0.99324	0.99343	0.99361
2.5	0.99379	0.99396	0.99413	0.99430	0.99446	0.99461	0.99477	0.99492	0.99506	0.99520
2.6	0.99534	0.99547	0.99560	0.99573	0.99585	0.99598	0.99609	0.99621	0.99632	0.99643
2.7	0.99653	0.99664	0.99674	0.99683	0.99693	0.99702	0.99711	0.99720	0.99728	0.99736
2.8	0.99744	0.99752	0.99760	0.99767	0.99774	0.99781	0.99788	0.99795	0.99801	0.99807
2.9	0.99813	0.99819	0.99825	0.99831	0.99836	0.99841	0.99846	0.99851	0.99856	0.99861
3.0	0.99865	0.99869	0.99874	0.99878	0.99882	0.99886	0.99889	0.99893	0.99897	0.99900
3.1	0.99903	0.99906	0.99910	0.99913	0.99916	0.99918	0.99921	0.99924	0.99926	0.99929
3.2	0.99931	0.99934	0.99936	0.99938	0.99940	0.99942	0.99944	0.99946	0.99948	0.99950
3.3	0.99952	0.99953	0.99955	0.99957	0.99958	0.99960	0.99961	0.99962	0.99964	0.99965
3.4	0.99966	0.99968	0.99969	0.99970	0.99971	0.99972	0.99973	0.99974	0.99975	0.99976
3.5	0.99977	0.99978	0.99978	0.99979	0.99980	0.99981	0.99981	0.99982	0.99983	0.99983
3.6	0.99984	0.99985	0.99985	0.99986	0.99986	0.99987	0.99987	0.99988	0.99988	0.99989
3.7	0.99989	0.99990	0.99990	0.99990	0.99991	0.99991	0.99992	0.99992	0.99992	0.99992
3.8	0.99993	0.99993	0.99993	0.99994	0.99994	0.99994	0.99994	0.99995	0.99995	0.99995
3.9	0.99995	0.99995	0.99996	0.99996	0.99996	0.99996	0.99996	0.99996	0.99997	0.99997

Taken from a Book entitled "An introduction to SQC" by D.C. Montgomery

TABLE: FACTORS USEFUL IN THE CONSTRUCTION OF CONTROL CHARTS

Sample size	Mean chart			Standard deviation chart					Range chart				
	Factors for control limits			Factors for central line					Factors for central line				
	A	A ₁	A ₂	c ₂	B ₁	B ₂	B ₃	B ₄	d ₂	D ₁	D ₂	D ₃	D ₄
2	2.121	3.760	1.886	0.5642	0	1.843	0	3.297	1.128	0	3.686	0	3.267
3	1.232	2.394	1.023	0.7236	0	1.858	0	2.568	1.693	0	4.358	0	2.575
4	1.500	1.880	0.729	0.7979	0	1.8080	0	2.266	2.059	0	4.698	0	2.282
5	1.342	1.596	0.577	0.8407	0	1.756	0	2.089	2.326	0	4.918	0	2.115
6	1.225	1.410	0.483	0.8686	0.026	1.711	0.030	1.970	2.534	0	5.078	0	2.004
7	1.134	1.277	0.419	0.8882	0.105	1.672	0.118	1.882	2.704	0.205	5.203	0.076	1.924
8	1.061	1.175	0.373	0.9027	0.167	1.638	0.185	1.815	2.847	0.387	5.307	0.136	1.864
9	1.000	1.094	0.337	0.9139	0.219	1.609	0.239	1.761	2.970	0.546	5.394	0.184	1.816
10	0.949	1.028	0.308	0.9227	0.262	1.584	0.284	1.716	3.078	0.687	5.469	0.223	1.777
11	0.905	0.973	0.285	0.9300	0.299	1.561	0.321	1.679	3.173	0.812	5.534	0.256	1.744
12	0.866	0.925	0.266	0.9359	0.331	1.541	0.354	1.646	3.258	0.924	5.592	0.284	1.716
13	0.832	0.884	0.249	0.9410	0.359	1.523	0.382	1.618	3.336	1.026	5.646	0.308	1.692
14	0.802	0.848	0.235	0.9453	0.384	1.507	0.406	1.594	3.407	1.121	5.693	0.329	1.671
15	0.775	0.816	0.223	0.9499	0.406	1.492	0.428	1.572	3.472	1.207	5.737	0.348	1.652
16	0.759	0.788	0.212	0.9523	0.427	1.478	0.448	1.552	3.532	1.285	5.779	0.364	1.636
17	0.0728	0.762	0.203	0.9551	0.445	1.465	0.466	1.534	3.588	1.359	5.817	0.379	1.621
18	0.707	0.738	0.194	0.9576	0.461	1.454	0.482	1.518	3.640	1.426	5.854	0.392	1.668
19	0.688	0.717	0.187	0.9599	0.477	1.443	0.497	1.503	3.689	1.490	5.888	0.404	1.596
20	0.671	0.697	0.180	0.9619	0.491	1.433	0.510	1.499	3.735	1.548	5.922	0.414	1.586
21	0.655	0.679	0.173	0.9638	0.504	1.424	0.523	1.477	3.778	1.606	5.950	0.425	1.575
22	0.640	0.662	0.167	0.9655	0.516	1.415	0.534	1.466	3.819	1.659	5.979	0.434	1.566
23	0.626	0.647	0.162	0.9670	0.527	1.407	0.545	1.455	3.858	1.710	6.006	0.443	1.557
24	0.612	0.632	0.157	0.9684	0.538	1.399	0.555	1.445	3.895	1.759	6.031	0.452	1.548
25	0.600	0.610	0.153	0.9696	0.548	1.392	0.565	1.435	3.931	1.804	6.058	0.459	1.541

This table is taken from "Fundamental of Applied statistics" by Gupta and Kapoor