

Name of the Course: B.Sc. Hons. Environmental Sciences - Core

Name of the Paper: Earth and Earth Surface Processes

Semester: I

Paper Code: 32181101

Duration: 3 Hours

Maximum Marks: 75

Instructions for Candidates

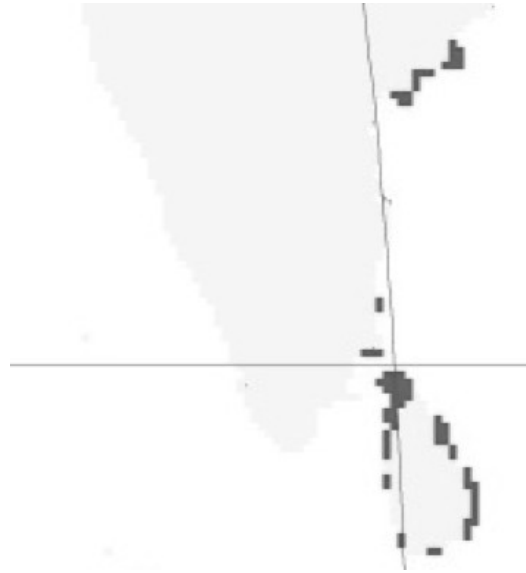
1. Answer any four questions.
2. All Questions carry equal marks.

SET A

1. Explain the role of humans in shaping the Earth's landscape and the resultant impacts that it has created on natural ecosystems across the world with relevant examples? What measures can be adopted according to you that can help in reducing or mitigating these human-induced impacts?
2. Discuss the role of plate tectonics in shaping up the Earth's land-surface features with suitable evidence from palaeontological, geological, stratigraphical and orogenic records.
3. What type of erosion leads to excessive land degradation? Explain the process in detail with suitable examples. Also, discuss the various measures that can be adopted to solve the problem of land degradation.
4. With the help of well-labelled diagrams, explain the process of continental drift, plate tectonics and assembly and the breakup of supercontinents.

5. What role has the Himalaya played in (i) the evolution of Indus Valley civilization and (ii) the progression of agriculture in the Indian subcontinent since the Holocene?

6.



The above map shows the distribution of mangroves (darker areas) in the lower half of peninsular India. Explain why mangroves are not found abundantly along the Western side of peninsular India while rainforests dominate in these regions. Explain your answer with respect to the formation and properties of peninsular mountain systems.